

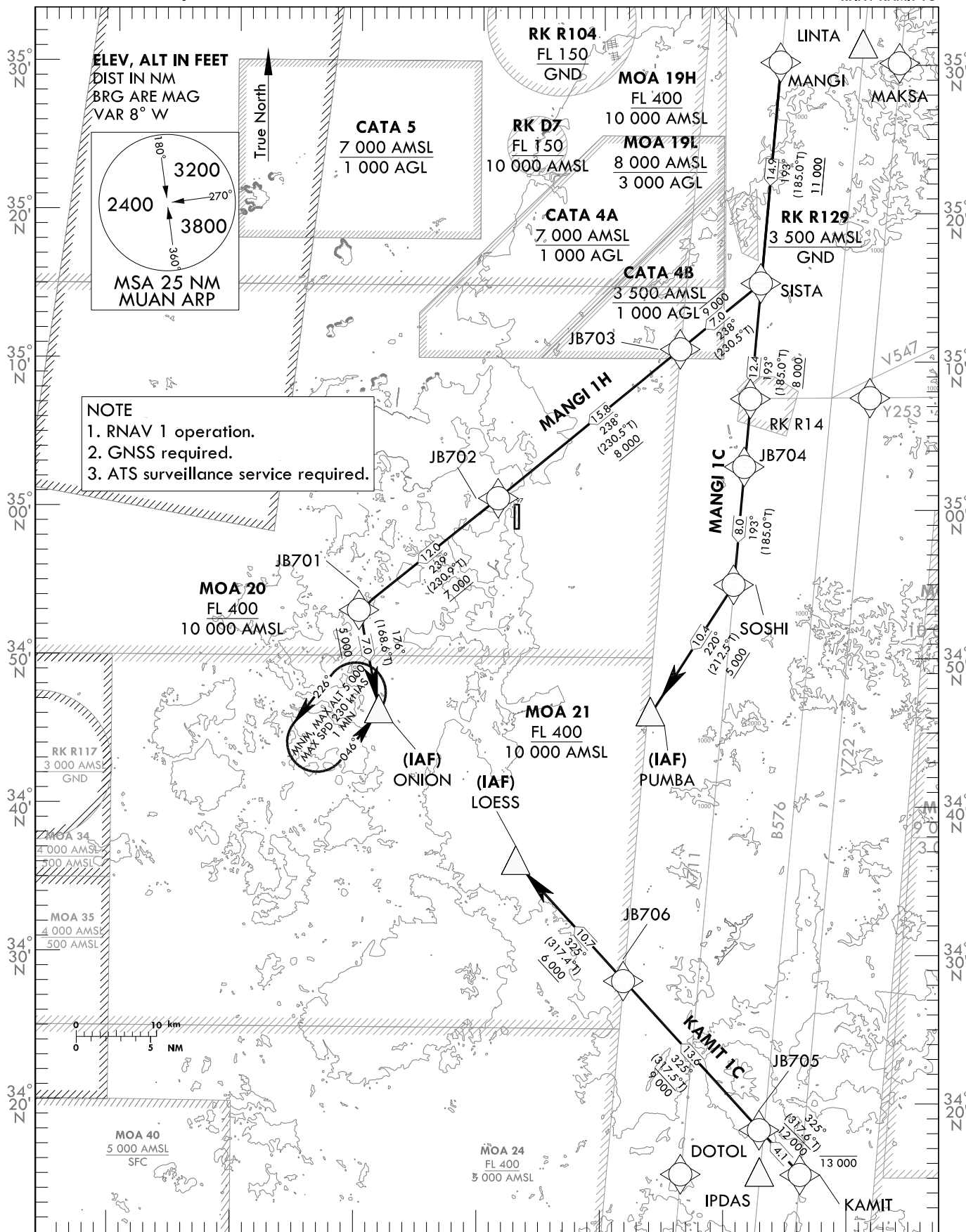
**STANDARD ARRIVAL CHART  
INSTRUMENT(STAR) - ICAO**

TRANSITION ALT 14 000  
TRANSITION LVL FL 140

GWANGJU APP	120.475	130.0
	228.9	265.5
MUAN TWR	118.25	118.85

**MUAN/Muan Intl(RKJB)**  
RWY 01  
RNAV MANGI 1C  
RNAV MANGI 1H  
RNAV KAMIT 1C

Note : Arrival under ICAO Flight Procedures.



Change : Information of bearing(225° → 226° and 045° → 046°).

MUAN/Muan Intl(RKJB)  
RWY 01  
RNAV MANGI 1C, RNAV MANGI 1H, RNAV KAMIT 1C  
HOLDING PROCEDURE  
AERONAUTICAL DATA TABULATION

Standard Instrument Arrival Procedure Coding Tables

RNAV MANGI 1C

Serial Number	Path Descriptor	Waypoint Identifier	Fly-over	Course/Track °M(T)	Distance (NM)	Turn direction	Altitude (ft)	Speed (kt)	Coordinates	VPA/RDH	Navigation specification	Remarks
001	IF	MANGI	-	-	-	-	-	-	35°30'11.3"N 126°44'31.7"E	-	RNAV 1	-
002	TF	SISTA	-	193(185.0)	14.9	-	+11 000	-	35°15'18.1"N 126°42'56.2"E	-	RNAV 1	-
003	TF	JB704	-	193(185.0)	12.4	-	+8 000	-	35°02'56.4"N 126°41'37.3"E	-	RNAV 1	-
004	TF	SOSHI	-	193(185.0)	8.0	-	-	-	34°54'59.5"N 126°40'46.8"E	-	RNAV 1	-
005	TF	PUMBA	-	220(212.5)	10.4	-	+5 000	-	34°46'14.4"N 126°34'00.9"E	-	RNAV 1	IAF

RNAV MANGI 1H

Serial Number	Path Descriptor	Waypoint Identifier	Fly-over	Course/Track °M(T)	Distance (NM)	Turn direction	Altitude (ft)	Speed (kt)	Coordinates	VPA/RDH	Navigation specification	Remarks
001	IF	MANGI	-	-	-	-	-	-	35°30'11.3"N 126°44'31.7"E	-	RNAV 1	-
002	TF	SISTA	-	193(185.0)	14.9	-	+11 000	-	35°15'18.1"N 126°42'56.2"E	-	RNAV 1	-
003	TF	JB703	-	238(230.5)	7.0	-	-9 000	-	35°10'50.6"N 126°36'20.5"E	-	RNAV 1	-
004	TF	JB702	-	238(230.5)	15.8	-	+8 000	-	35°00'44.9"N 126°21'29.4"E	-	RNAV 1	-
005	TF	JB701	-	239(230.9)	12.0	-	+7 000	-	34°53'09.6"N 126°10'10.3"E	-	RNAV 1	-
006	TF	ONION	-	176(168.6)	7.0	-	+5 000	-	34°46'19.7"N 126°11'50.8"E	-	RNAV 1	IAF

RNAV KAMIT 1C

Serial Number	Path Descriptor	Waypoint Identifier	Fly-over	Course/Track °M(T)	Distance (NM)	Turn direction	Altitude (ft)	Speed (kt)	Coordinates	VPA/RDH	Navigation specification	Remarks
001	IF	KAMIT	-	-	-	-	-13 000	-270	34°15'14.1"N 126°46'17.7"E	-	RNAV 1	-
002	TF	JB705	-	325(317.6)	4.1	-	-12 000	-270	34°18'14.7"N 126°42'58.8"E	-	RNAV 1	-
003	TF	JB706	-	325(317.5)	13.6	-	-9 000	-270	34°28'15.6"N 126°31'54.1"E	-	RNAV 1	-
004	TF	LOESS	-	325(317.4)	10.7	-	+6 000	-	34°36'10.5"N 126°23'06.3"E	-	RNAV 1	IAF

HOLDING PROCEDURE

Holding Identification	Path Descriptor	Waypoint Identifier	Fly-over	Course/Track °M(T)	Time (min)	Turn direction	Altitude (ft)	Speed (kt)	Coordinates	VPA/RDH	Navigation specification	Remarks
RNAV MANGI 1H	HIM	ONION	Y	045 (037.7)	1	L	@5 000	-230	34°46'19.7"N 126°11'50.8"E	-	RNAV 1	-

**STANDARD ARRIVAL CHART  
INSTRUMENT(STAR) - ICAO**

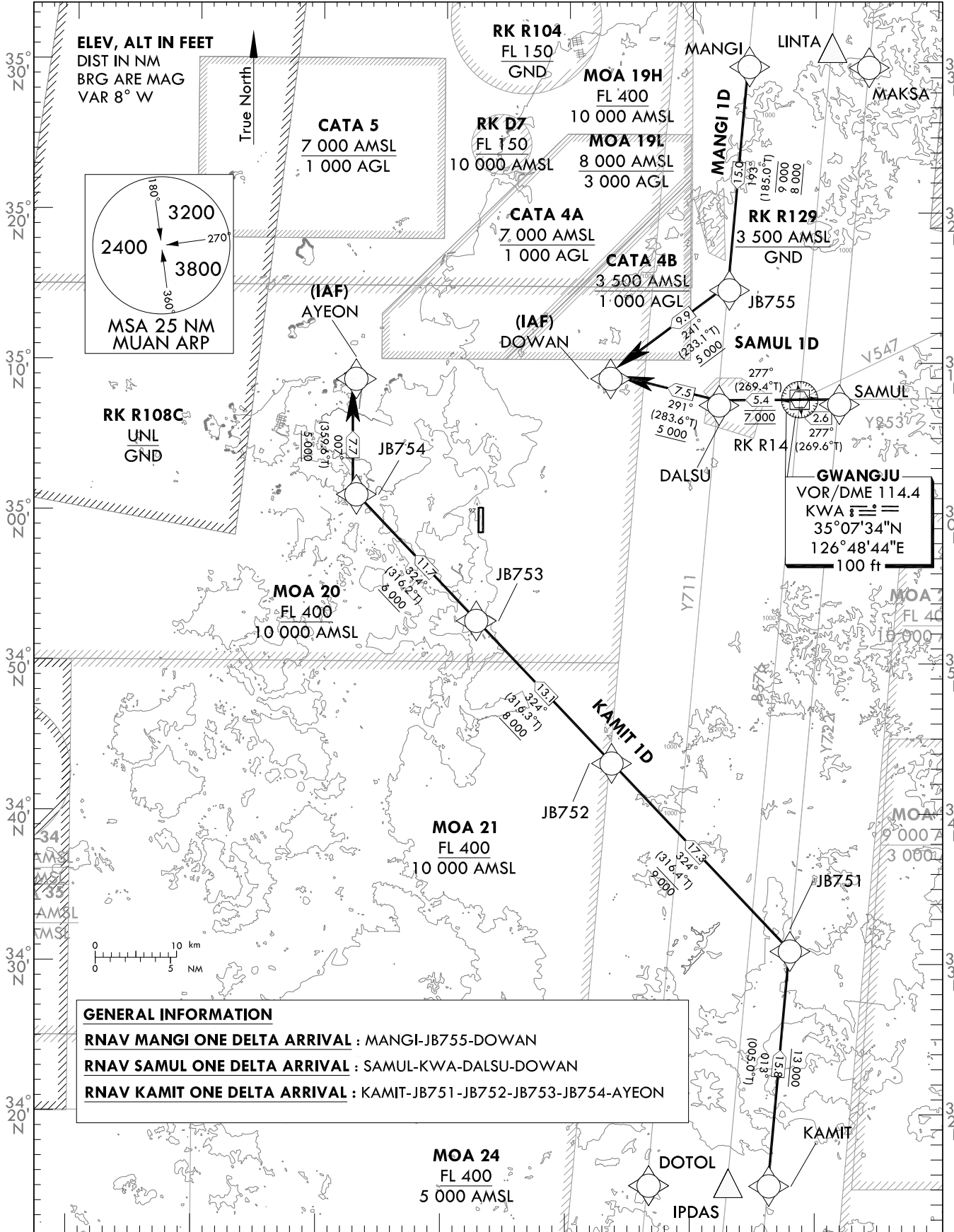
TRANSITION ALT 14 000  
TRANSITION LVL FL 140

GWANGJU APP	120.475	130.0
	228.9	265.5
MUAN TWR	118.25	118.85

**MUAN/Muan Intl(RKJB)**

RWY 19  
RNAV MANGI 1D  
RNAV SAMUL 1D  
RNAV KAMIT 1D

Note : Arrival under ICAO Flight Procedures.



**NOTE**

1. RNAV 1 operation.
2. GNSS required.
3. ATS surveillance service required.

Change : Information of MAG VAR, MSA, MAG course, VOR/DME and Establishment of OBST.

MUAN/Muan Intl(RKJB)  
RWY 19  
RNAV MANGI 1D, RNAV SAMUL 1D  
RNAV KAMIT 1D

AERONAUTICAL DATA TABULATION

Standard Instrument Arrival Procedure Coding Tables

RNAV MANGI 1D

Serial Number	Path Descriptor	Waypoint Identifier	Fly-over	Course/Track °M(T)	Distance (NM)	Turn direction	Altitude (ft)	Speed (kt)	Coordinates	VPA/RDH	Navigation specification	Remarks
001	IF	MANGI	-	-	-	-	-	-	35°30'11.3"N 126°44'31.7"E	-	RNAV 1	-
002	TF	JB755	-	193(185.0)	15.0	-	-9 000 +8 000	-	35°15'13.4"N 126°42'55.7"E	-	RNAV 1	-
003	TF	DOWAN	-	241(233.1)	9.9	-	+5 000	-	35°09'16.1"N 126°33'16.0"E	-	RNAV 1	IAF

RNAV SAMUL 1D

Serial Number	Path Descriptor	Waypoint Identifier	Fly-over	Course/Track °M(T)	Distance (NM)	Turn direction	Altitude (ft)	Speed (kt)	Coordinates	VPA/RDH	Navigation specification	Remarks
001	IF	SAMUL	-	-	-	-	-	-	35°07'35.5"N 126°51'54.4"E	-	RNAV 1	-
002	TF	KWA	-	277(269.6)	2.6	-	-	-	35°07'34.4"N 126°48'43.6"E	-	RNAV 1	-
003	TF	DALSU	-	277(269.4)	5.4	-	@7 000	-	35°07'31.0"N 126°42'06.5"E	-	RNAV 1	-
004	TF	DOWAN	-	291(283.6)	7.5	-	+5 000	-	35°09'16.1"N 126°33'16.0"E	-	RNAV 1	IAF

RNAV KAMIT 1D

Serial Number	Path Descriptor	Waypoint Identifier	Fly-over	Course/Track °M(T)	Distance (NM)	Turn direction	Altitude (ft)	Speed (kt)	Coordinates	VPA/RDH	Navigation specification	Remarks
001	IF	KAMIT	-	-	-	-	-	-	34°15'14.1"N 126°46'17.7"E	-	RNAV 1	-
002	TF	JB751	-	013(005.0)	15.8	-	+13 000	-	34°30'57.9"N 126°47'58.1"E	-	RNAV 1	-
003	TF	JB752	-	324(316.4)	17.3	-	-9 000	-	34°43'31.2"N 126°33'28.6"E	-	RNAV 1	-
004	TF	JB753	-	324(316.3)	13.1	-	+8 000	-	34°53'01.3"N 126°22'26.0"E	-	RNAV 1	-
005	TF	JB754	-	324(316.2)	11.7	-	+6 000	-	35°01'25.8"N 126°12'36.4"E	-	RNAV 1	-
006	TF	AYEON	-	007(359.6)	7.7	-	+5 000	-	35°09'10.2"N 126°12'32.1"E	-	RNAV 1	IAF

Change : Information of MAG course.